

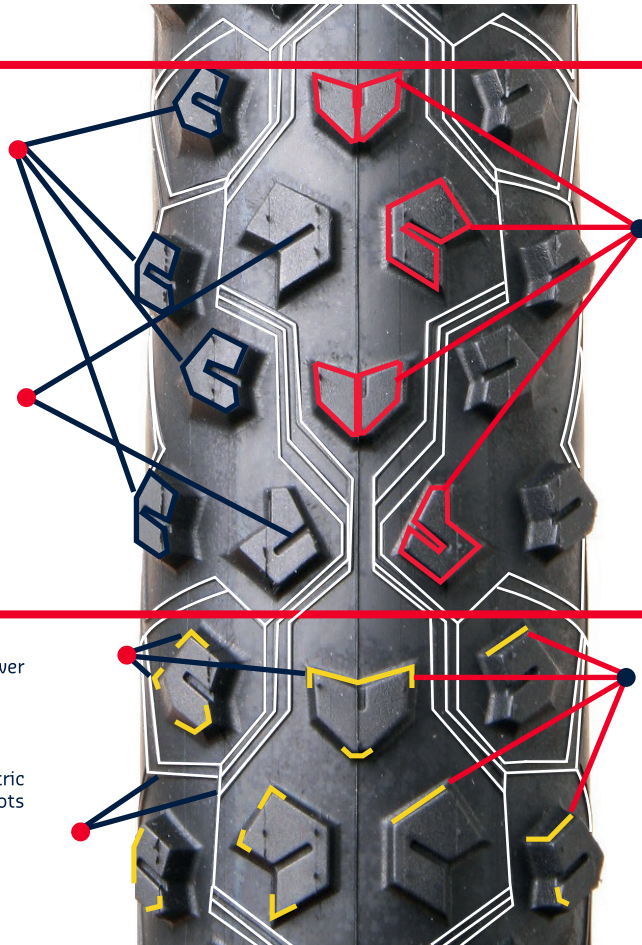
SPECIFICATIONS

TAIPAN

GRIP

LATERAL PROGRESSIVE KNOBS :
Optimise grip at every angle and deliver smooth and secure transitions when cornering.

GROOVES :
They multiply the contact surfaces with the ground and increase the flexibility of the knobs



TRACTION

KNOB SHAPE :
shapes delivers progressive traction as power is applied.

BETWEEN THE KNOBS :
Between the knobs there are small geometric raised ridges that aid traction on wet roads and create a non-slip surface.

PERFORMANCE

HEIGHT :
To optimize rolling resistance, the center knobs are a maximum height of 3mm.

DESIGN :
The shape of the center knobs reduces rolling resistance with aggressive squared knob profile on the rotating edges.

SPACING :
Knobs are spaced to shed and shred regardless if the conditions are wet or dry.

BRAKING

KNOB BEVELS :
The beveling or angle of the knobs from the base of the tread is quite steep to increase braking power.

CONTACT SURFACE :
The shape of the knobs produces a larger contact area in the direction of wheel rotation during braking.

TECHNOLOGY

As the Taipan is focused on all-around performance, it can face every different fields and climatic conditions. Its best dimensions are 27.5" and 29" with a focal point : versatility and durability. To reach this goal, we've concentrated on producing a quality tire rather than low-end models often found on medium and low-end OE bicycles.

CONSTRUCTION

HARDSKIN 66TPI Hardskin 66 TPI casing, Tube type—Hardskin reinforced with a textile grille. Bulletproof construction and puncture resistance.

TUBELESS HARD SKIN 66TPI Tubeless Hardskin 66 TPI casing, Hardskin reinforced with a textile grille. A real Tubeless tire.

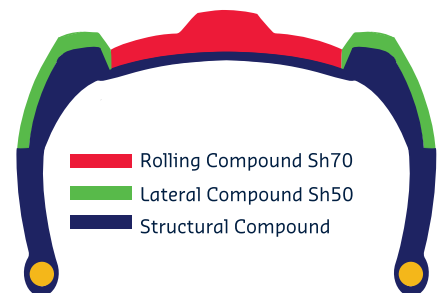
TUBELESS READY 66TPI Tubeless Ready 66 TPI casing. Pure performance focused highest-end model.

TUBELESS READY HARD SKIN 127TPI Tubeless Ready 127 TPI casing, Hardskin reinforced with a textile grille. Excellent balance between reliability and performance.

DIMENSIONS

26 x 2.10 | 27.5 x 2.10 | 27.5 x 2.25 | 29 x 2.10
52-559 | 52-584 | 54-584 | 52-622

COMPOUNDS



Triple-Compound : Again, to create a product that truly performs as an all-around tire, three compounds of specific Shores are used depending on the utility of the compound and the area of the tire. The lateral knobs have a harder base compound to reduce knob deformation and a softer grippier compound on top. The center rolling knobs use a compound that balances grip, traction and performance.